



## **FUEL RELIEF VALVE LUN 7463.81**

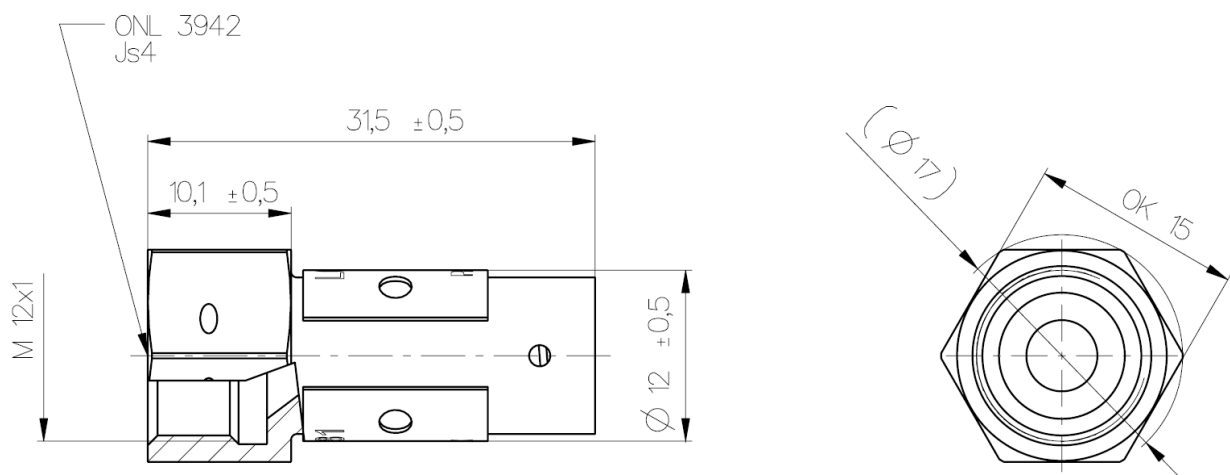
The fuel relief valve LUN 7463 is 2/2 way check valve of poppet design. This valve protects A/C fuel lines from overpressure.



## SPECIFICATION LUN 7463.81

Weight:	max. 0,05 kg
Temperature range:	operating -55 °C to +70 °C non-operating -55 °C to +85 °C
Fluid temperature:	-55 °C to +60 °C
Operating height range:	from 0 to 35 000 ft (10 700 m)
Cracking overpressure:	0,20 – 0,25 MPa;
Fluid:	kerosene based fuels

## DIMENSIONS



Data stated in this datasheet are for information purposes only, and are not subject to change. Specific installation dimensions can be agreed with customer for given installation.