

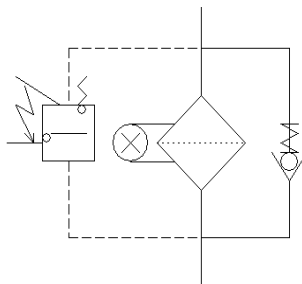


## FUEL FILTER LUN7661.81

The fuel filter LUN 7661 is a fine fuel filter for turbine or reciprocation engine applications operating with kerosene based fuels. The filter is equipped with mechanical pop-out clogging indicator which senses the clogged status of the filter during operation. Once the status “clogged” is sensed during operation the indicator will stay actuated until maintenance action is taken to reset it manually.

In order to monitor the delta pressure rise over the filter element the preclogging electric switch indicator is incorporated.

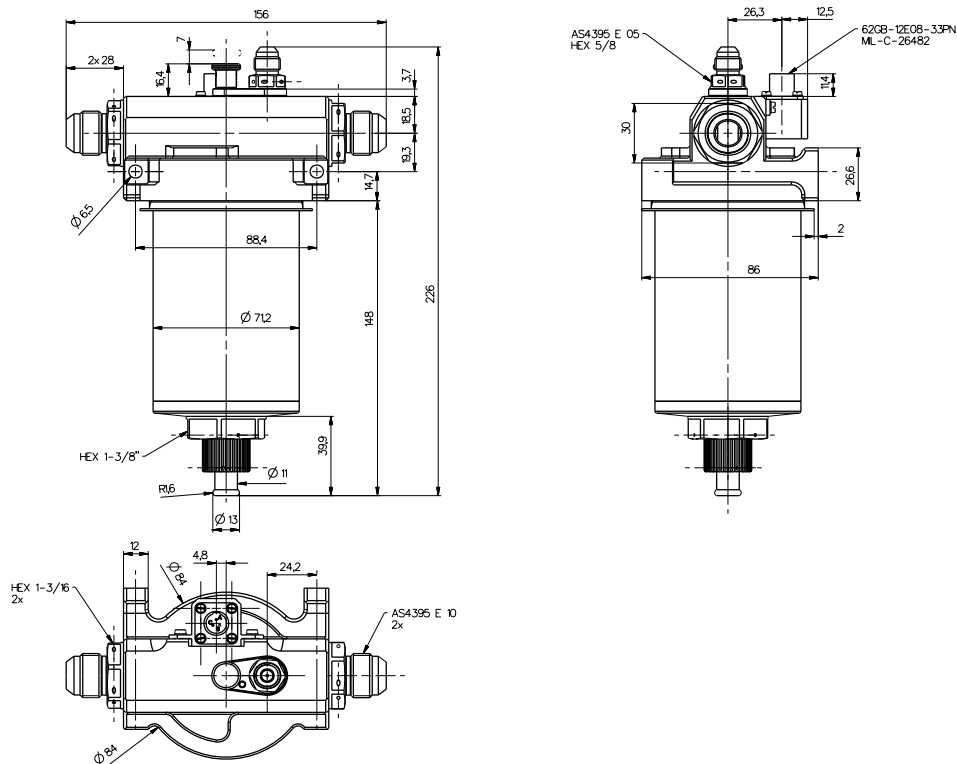
The filter is equipped with disposable filter element. The filter bowl can be drained from water with a manually operated drain valve.



## SPECIFICATION LUN 7661.81

Weight:	max. 1,2 kg
Temperature range:	operating -55 °C to +70 °C non-operating -55 °C to +85 °C
Fluid temperature:	-55 °C to +60 °C
Operating height range:	from 0 to 35 000 ft (10 700 m)
Fluid:	kerosene based fuels
Filtration	15 µm nominal

## DIMENSIONS



Data stated in this datasheet are for information purposes only, and are not subject to change. Specific installation dimensions can be agreed with customer for given installation.



*Budějovická 148, 382 32 Velešín, Czech Republic*

**phone:** 0042 / 380 340 511      **fax:** 0042 / 380 340 612  
**http:** [www.jihostroj.com](http://www.jihostroj.com)      **E-mail:** [sales.ad@jihostroj.cz](mailto:sales.ad@jihostroj.cz)